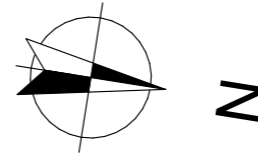


LES BORÉALES

DE SAINT-PRYVÉ

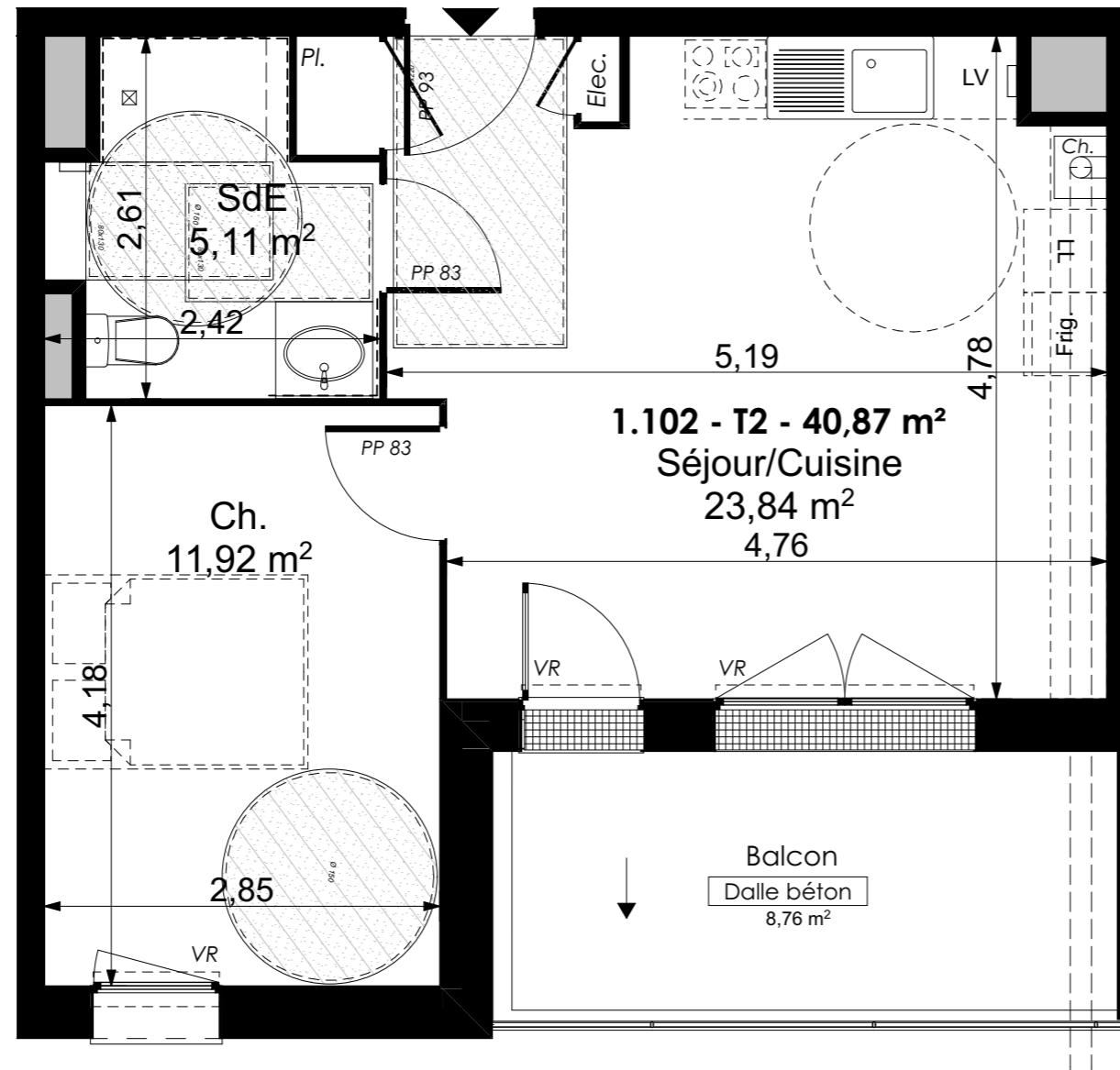


Valloire Habitat 

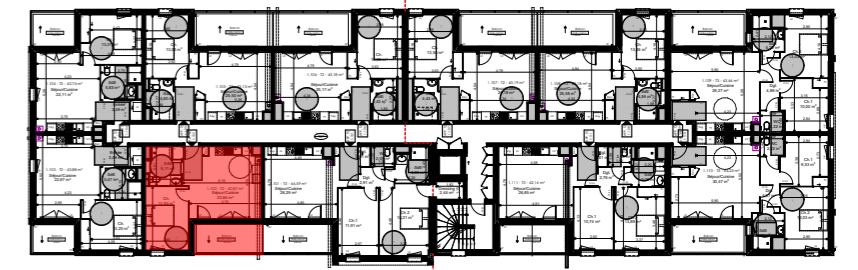
Groupe ActionLogement

28 bis rue du Gros Raisin
45750 SAINT-PRYVE-SAINT-MESMIN

Les BoRéales de Saint-Pryvé



TYPE T2 - LOGEMENT 1-102 R+1		
Séjour/Cuisine		23,84 m ²
SdB		5,11 m ²
Ch. 1		11,92 m ²
Total surfaces habitables		40,87 m ²
Annexes		Surf. Utile
Balcon		8,76 m²
Total surfaces Annexes		8,76 m ²
	TOTAL SURFACES	49,63 m ²



15/11/2022 Indice C

Ech : 1:50

0.00 0.50 1.00 2.00 3.00